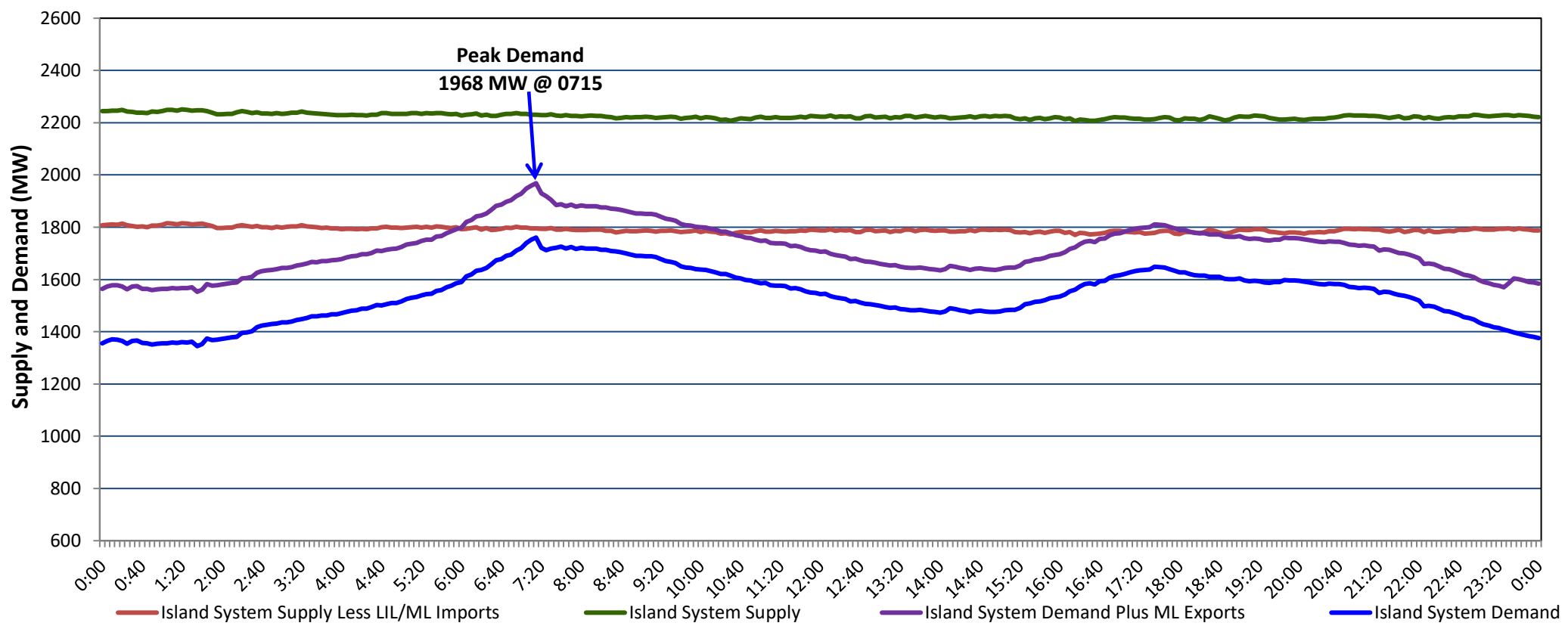


## Newfoundland Labrador Hydro (NLH) Supply and Demand Status Report Filed Thursday, January 25, 2024

### Section 1 Island Interconnected System Supply, Demand & Exports Actual 24 Hour System Performance For Wednesday, January 24, 2024



#### Supply Notes For January 24, 2024

1,2

- A As of 0800 hours, May 21, 2023, Holyrood Unit 2 unavailable due to forced extension to planned outage (170 MW).  
 B As of 2059 hours, July 13, 2023, Stephenville Gas Turbine unavailable (50 MW).  
 C As of 0714 hours, January 08, 2024, Holyrood Unit 1 available at 160 MW (170 MW).

### Section 2 Island Interconnected Supply and Demand

Thu, Jan 25, 2024	Island System Outlook <sup>3</sup>		Seven-Day Forecast	Temperature (°C)		Island System Daily Peak Demand (MW)	
				Morning	Evening	Forecast	Adjusted <sup>7</sup>
Available Island System Supply: <sup>5</sup>	2,272	MW	Thursday, January 25, 2024	-2	-3	1,710	1,610
NLH Island Generation: <sup>4,8</sup>	1,465	MW	Friday, January 26, 2024	-7	-6	1,585	1,487
NLH Island Power Purchases: <sup>6</sup>	150	MW	Saturday, January 27, 2024	-6	-6	1,375	1,279
Other Island Generation:	230	MW	Sunday, January 28, 2024	-3	-1	1,370	1,274
ML/LIL Imports:	427	MW	Monday, January 29, 2024	-14	-14	1,660	1,561
Current St. John's Temperature & Windchill:	-3 °C	-12 °C	Tuesday, January 30, 2024	-13	-10	1,670	1,571
7-Day Island Peak Demand Forecast:	1,710	MW	Wednesday, January 31, 2024	-7	-9	1,540	1,442

#### Supply Notes For January 25, 2024

3

- Notes:
1. Generation outages for running and corrective maintenance are included. These are not unusual for power system operations. They generally do not impact customer supply. The power system operators schedule outages to system equipment whenever possible to coincide with periods when customer demands are low and sufficient supply reserves are available. However, from time to time equipment outages are necessary and reserves may be impacted.
  2. Due to the Island system having no synchronous connections to the larger North American grid, when there is a sudden loss of large generating units there may be a requirement for some customer's load to be interrupted for short periods to bring generation output equal to customer demand. This automatic action of power system protection, referred to as under frequency load shedding (UFLS), is necessary to ensure the integrity and reliability of system equipment. Under frequency events have typically occurred 5 to 8 times per year on the Island Interconnected System and the resultant customer load interruptions are generally less than 30 minutes. With the activation of the Maritime Link frequency controller during the winter of 2018, UFLS events have occurred less frequently.
  3. As of 0800 Hours.
  4. Gross output including station service at Holyrood (24.5 MW) and improved NLH hydraulic output due to water levels (35 MW).
  5. Gross output from all Island sources (including Note 4).
  6. NLH Island Power Purchases include: CBPP Co-Gen, Nalcor Exploits, Rattle Brook, Star Lake, Wind Generation and capacity assistance (when applicable).
  7. Adjusted for curtailable load, market activities and the impact of voltage reduction when applicable.
  8. Due to limitations inherent in the design of combustion turbines, the output of combustion turbines may be reduced in the event that ambient temperatures exceed the threshold

### Section 3 Island Peak Demand Information Previous Day Actual Peak and Current Day Forecast Peak

Wed, Jan 24, 2024	Actual Island Peak Demand <sup>9</sup>	7:15	1,968 MW
Thu, Jan 25, 2024	Forecast Island Peak Demand		1,710 MW

- Notes: 9. Island Demand / LIL / ML Exports (where applicable) is supplied by NLH generation and purchases, plus generation owned and operated by Newfoundland Power and Corner Brook Pulp & Paper (Deer Lake Power, DLP).